

# HIGH CURRENT INDUCTORS



**MODEL NO. : FMJ- 0730R HF SERIES**

**FEATURES:**

- \* COMPACT UNIBODY CONSTRUCTION.
- \* SOLID STRUCTURE WITH LOWER LOSS,LOW PROFILE, HIGH POWER, LOW DCR.
- \* CLOSED MAGNETIC CIRCUIT CONSTRUCTION FOR HIGH DENSITY BOARD ASSEMBLY .
- \* MORE EFFICIENT NOISE SUPPRESSION.
- \* CUSTOM DESIGNS AVAILABLE.
- \* COMPLIANT WITH RoHS AND HALOGEN FREE.

**APPLICATION :**

- \* DC/DC CONVERTER IN POWER REGULATION SYSTEM.
  - NOTEBOOK COMPUTERS    ● DESKTOP PC.
  - VGA CARD    ● SERVERS    ● ROUTERS
- \* INDUCTOR FOR GENERAL PURPOSE AVAILABLE.

**APPEARANCE:**



**ELECTRICAL SPECIFICATION:**

PART NO	INDUCTANCE (uH) ±20%	DCR(mΩ)		TEMPERATURE RISE CURRENT (ADC) TYPICAL	SATURATION CURRENT (ADC) TYPICAL (NOTE 3)
		TYPICAL	MAX		
FMJ-0730R-R10 HF	0.10	1.0	1.4	35	45
FMJ-0730R-R22 HF	0.22	2.3	2.8	24	34
FMJ-0730R-R33 HF	0.33	3.0	3.5	21	25
FMJ-0730R-R47 HF	0.47	3.7	4.1	18	20
FMJ-0730R-R68 HF	0.68	5.05	5.50	15.5	17
FMJ-0730R-R82 HF	0.82	5.4	6.0	14	16
FMJ-0730R-1R0 HF	1.0	6.5	7.4	12	15
FMJ-0730R-1R5 HF	1.5	9.5	12.1	12	14
FMJ-0730R-2R2 HF	2.2	12.8	15	9.5	10
FMJ-0730R-3R3 HF	3.3	18	22	8.5	9.5
FMJ-0730R-4R7 HF	4.7	30.5	35	5.8	6.5
FMJ-0730R-6R8 HF	6.8	43	48	5.0	6.0
FMJ-0730R-100 HF	10.0	62	69	4.5	5.0
FMJ-0730R-150 HF	15.0	93	105	3.5	4.0
FMJ-0730R-220 HF	22.0	160	185	2.7	3.2

NOTE(1): Measuring condition: 100 KHZ, 1Vrms.

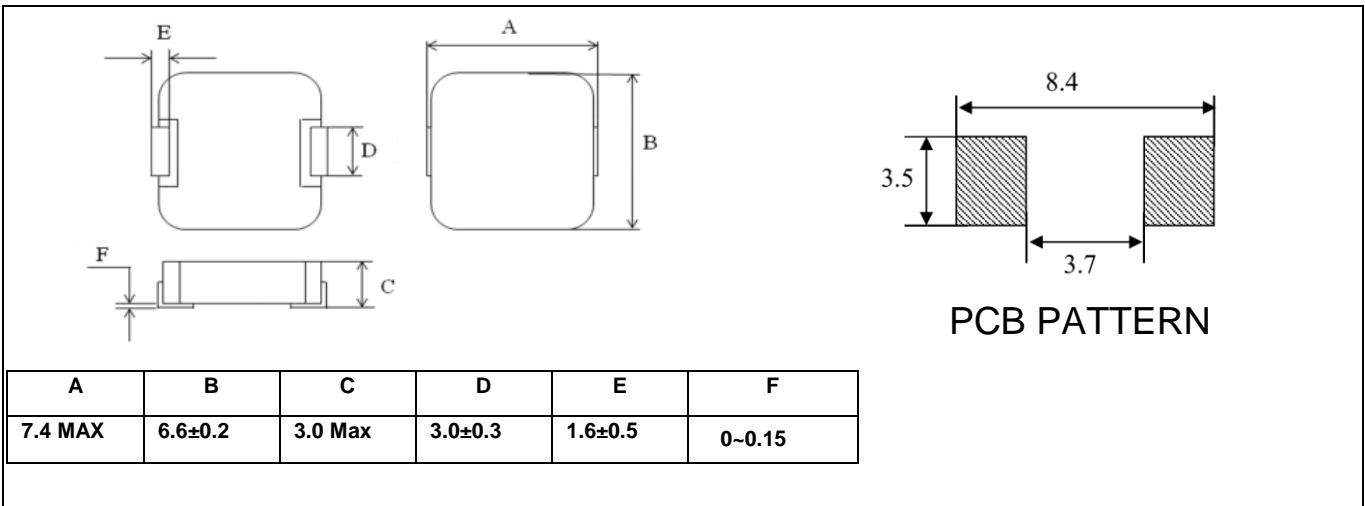
NOTE(2): Δ T=40°C approximately under the temperature rise current.

NOTE(3): The saturation current indicates the value of DC current is approximately 30% lower than its initial value of inductance.

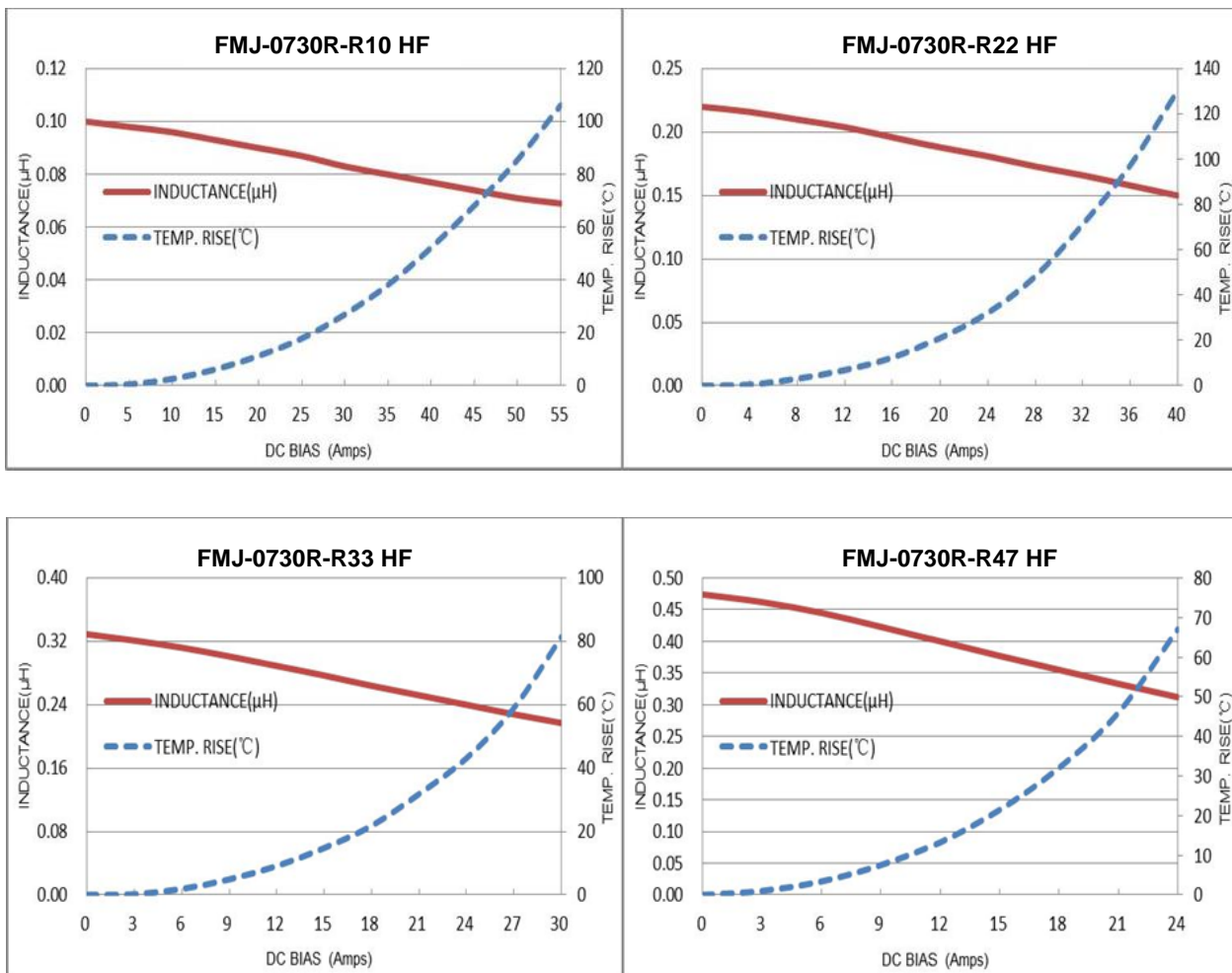
NOTE(4): Operating temperature range -55°C~ +125°C ( ambient + self-temp. rise ) .

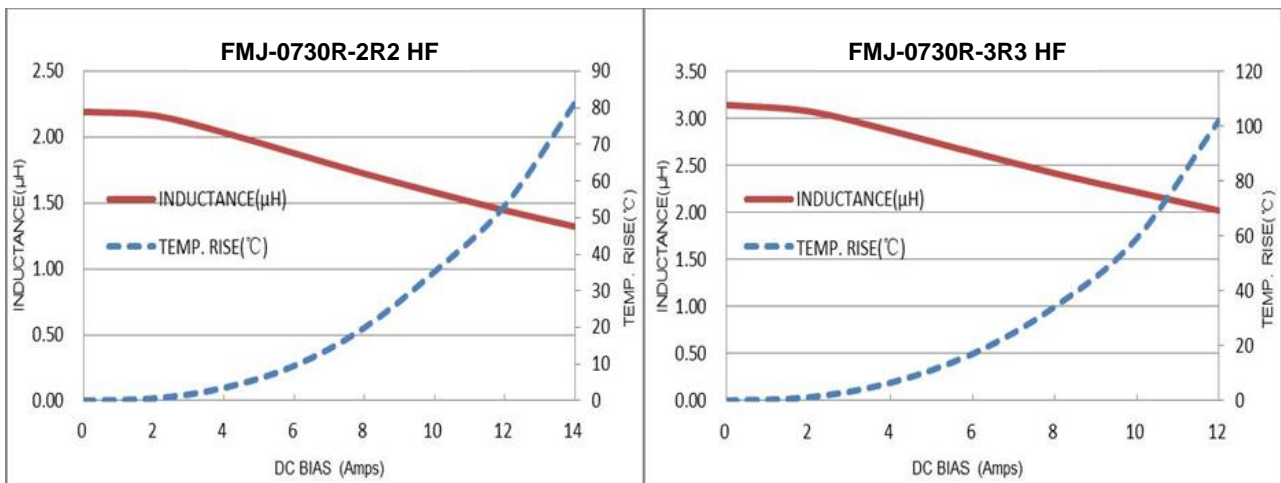
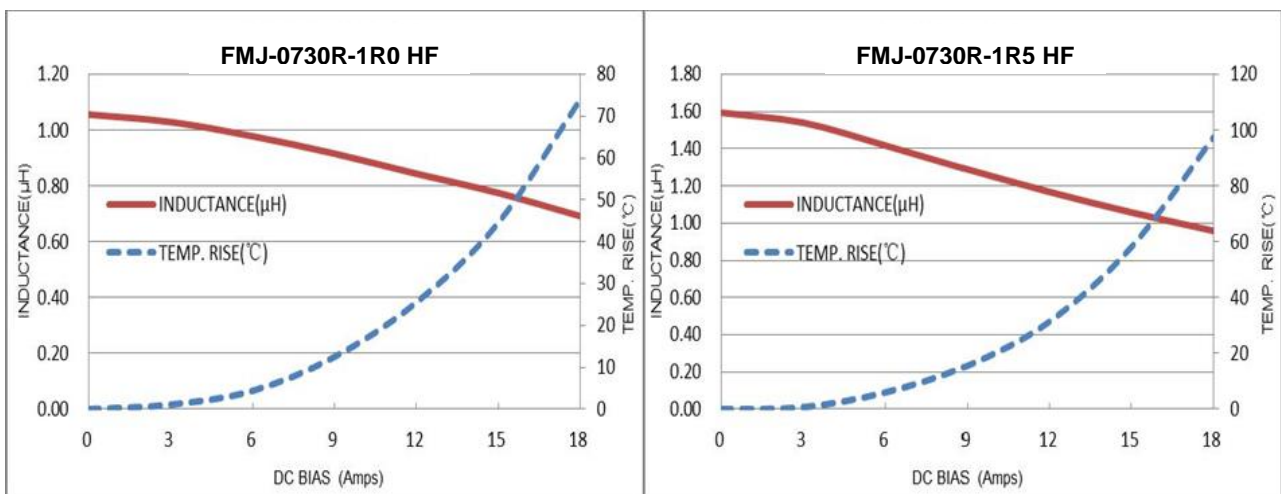
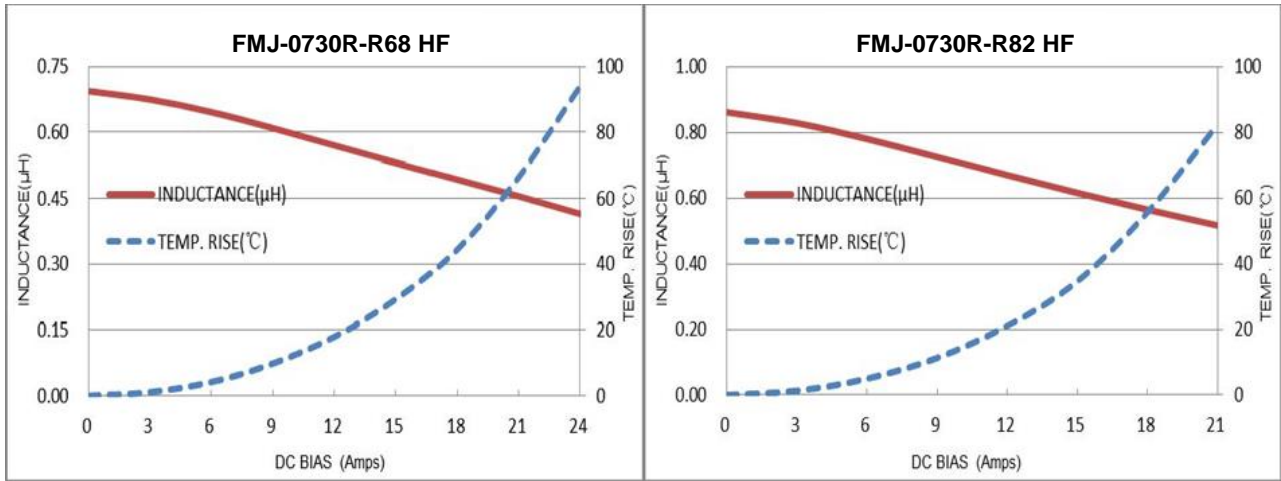
NOTE(5): The part temperature (ambient + temp. rise) should not exceed 125 °C under worst case operating conditions. Circuit design, component placement, PWB trace size and thickness, airflow and other cooling provisions all affect the part temperature. Part temperature should be verified in the end application.

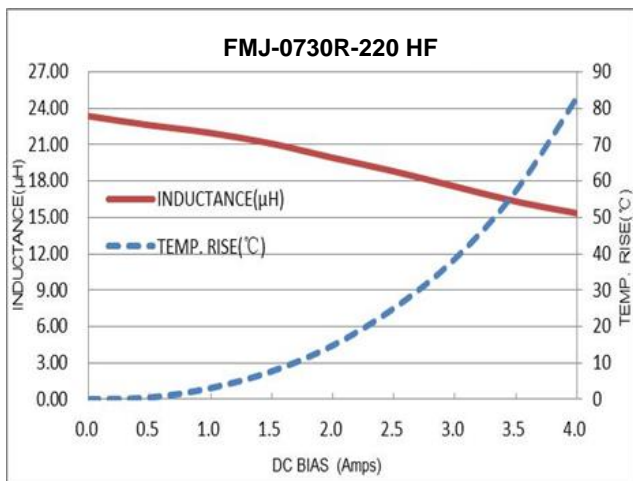
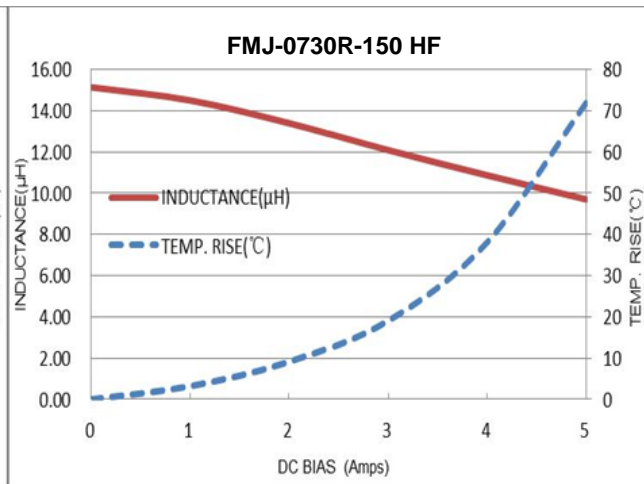
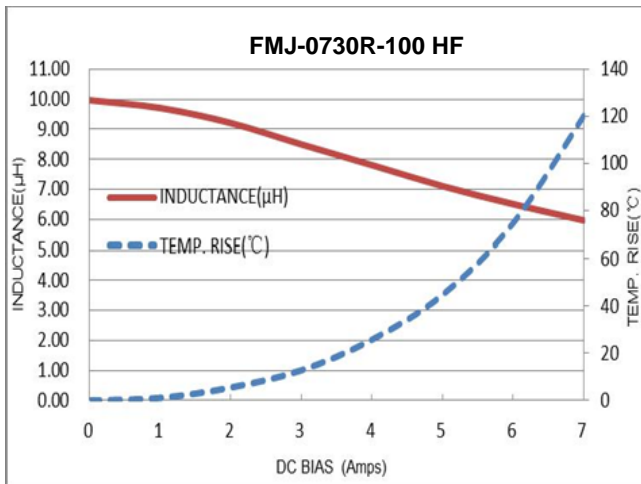
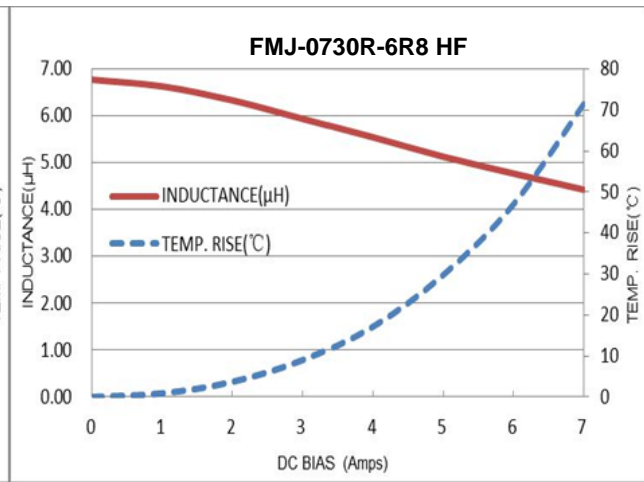
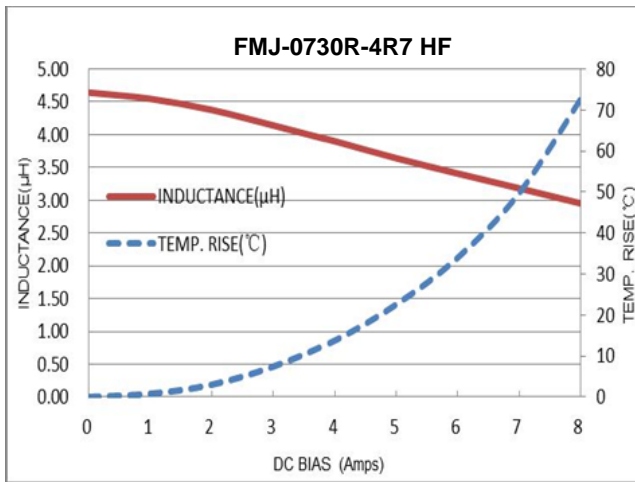
## PHYSICAL DIMENSION : (UNIT:mm)



## Inductance and Temperature Rise vs. DC Current







**PACKAGING SPEC:**

1. REEL SIZE & UNITS PER REEL :13",1500PCS.
2. TAPE WIDTH:16mm.
3. REEL WIDTH:22.4mm.
4. COMPONENT PITCH:12mm
5. WEIGHT: 0.7 g / pcs typ.